



EUROPEAN TAEKWONDO CHAMPIONSHIPS

BELGRADE • MAY 9-12, 2024



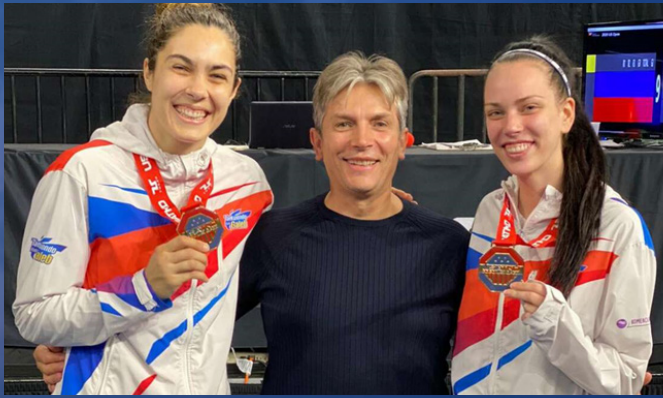
Accommodation Guide

*Dare to Dream.
Dare to Win.*



WELCOME TO BELGRADE!

Belgrade is the capital, the largest and the most important city in Serbia. It lies on the two rivers, Sava and Danube, with fabulous river banks, islands, parks and entertainments for visitors. It is also one of the oldest cities in Europe on the historical crossroads between east and west and with the population of 2 million inhabitants. Today Belgrade is a popular touristic destination, and besides history, food, vibrant night life, especially famous by its hospitality.



There are more than one-thousand sports facilities in Belgrade and sport life is very important in daily life for its inhabitants. For the last 20 years, Belgrade has been hosting major sport events every year in different sports, including World and European Championships, World Cups, Tournaments, and other great sport manifestations.

ACCOMMODATION AND TRANSPORTATION

Organizing Committee can offer accommodation in the hotels very near to the venue, with the nearest 3 km and the furthest only 6 km away from the venue. They are all experienced in accommodating athletes at major sport events.

Accommodation

Hotels have been carefully picked to be near the Venue and most suitable for Athletes and Coaches.

- Prices in the offer below are for bed and breakfast per person per day.
- Deadline for reservation is the 5th April 2024
- No refunding for the accommodation fee will be made after the 20th April 2024

Please contact accommodation@tkdevents.rs for reservation or more information.



Accommodation summary offer:

4*	HOTEL	DISTANCE VENUE-HOTEL	PRICE PER PERSON PER DAY
	ŠUMADIJA	2,8 km - 5 minutes	B&B
	single bed room		130
	twin bed room		95
	IN HOTEL	3,7 km - 6 minutes	B&B
	single bed room		145
	twin bed room		110
	MONA PLAZA	6 km - 13 minutes	B&B
	single bed room		155
	twin bed room		115
	BLEECKER	5,6 km - 8 minutes	B&B
	single bed room		135
	twin bed room		100
	HILTON	3,8 km - 9 minutes	B&B
	single bed room		200
	twin bed room		150

3*	HOTEL	DISTANCE VENUE-HOTEL	PRICE PER PERSON PER DAY
	PUTNIK INN	6,2 km - 9 minutes	B&B
	single bed room		120
	twin bed room		90
	MOXY	3,9 km - 10 minutes	B&B
	single bed room		130
	twin bed room		95

Transportation

OC organizes transportation for the participants of the event as follows:

- Airport transportation will be available to all national teams and participants who made accommodation reservation through OC
- Shuttle transportation will be available to all national teams and participants who made accommodation reservation through OC for the whole period of staying

Please contact transportation@tkdevents.rs for reservation or more information.



Hotel ŠUMADIJA - 4*

Hotel Šumadija is a modern recently renovated, 4* business hotel. It is located in a quiet and attractive part of the city, 15 minutes walking from famous lake and Ada Ciganlija Park. It is 10 minutes' drive from New Belgrade.

Distance from the Venue 2,8 km
5 minutes drive

Price per person per day	Bed and breakfast
Single bed room	130 EUR
Twin bed room	95 EUR



In HOTEL - 4*

Modern business hotel in the financial and business area of New Belgrade. Modern rooms are equipped with anti-allergic sheets and pillows and many other additional amenities. Hotel is situated next to the highway to Zagreb and Novi Sad, which makes it very easy to approach. Also, it is walking distance from the one of the biggest shopping malls in Belgrade and Danube River Park. This hotel is a 10-minutes' drive away from Belgrade's historical center.

Distance from the Venue 3,7 km
6 minutes drive



Price per person per day	Bed and breakfast
Single bed room	145 EUR
Twin bed room	110 EUR

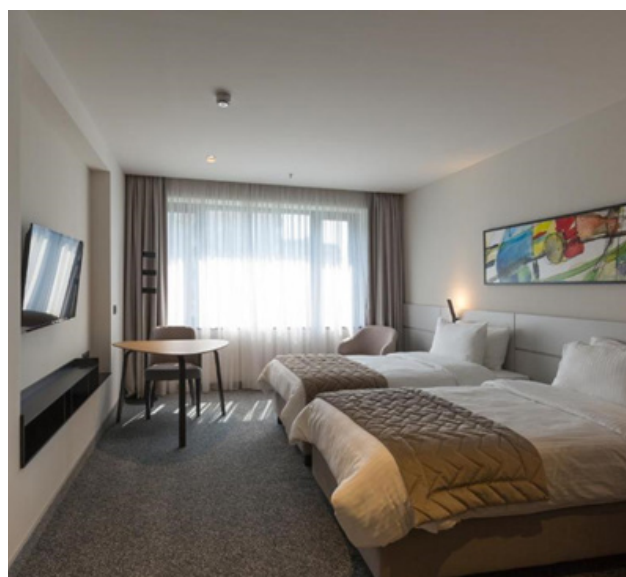


MONA PLAZA Hotel - 4*

Opened in 2020 and located in famous part of Belgrade's downtown Dorcol, an urban crossroads of cultures and styles, Mona Plaza is the largest convention center in the old part of town. Rooms are overlooking the most beautiful parts of the Serbian capital.

Distance from the Venue 6 km
13 minutes drive

Price per person per day	Bed and breakfast
Single bed room	155 EUR
Twin bed room	115 EUR



BLEECKER Hotel - 4*

Hotel blends contemporary design with the convenience of being located in the prosperous and the fastest-growing business area of New Belgrade. All the rooms are carefully decorated and equipped with modern commodities to offer an enjoyable and comfortable stay. It takes only 10 minutes drive to the Belgrade city center.

Distance from the Venue 5,6 km
8 minutes' drive



Price per person per day	Bed and breakfast
Single bed room	135 EUR
Twin bed room	100 EUR



HILTON Hotel - 4*

Located in central Belgrade, with old Town views and blocks from Belgrade history, museums and culture centers. Hotel is very near to the Old Town, Kalemegdan fortress and Knez Mihailova Street pedestrian zone.

Distance from the Venue 3,8 km
9 minutes drive

Price per person per day	Bed and breakfast
Single bed room	200 EUR
Twin bed room	150 EUR

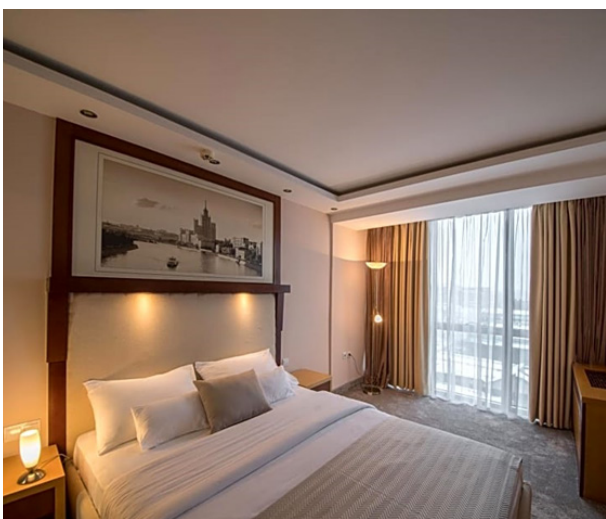
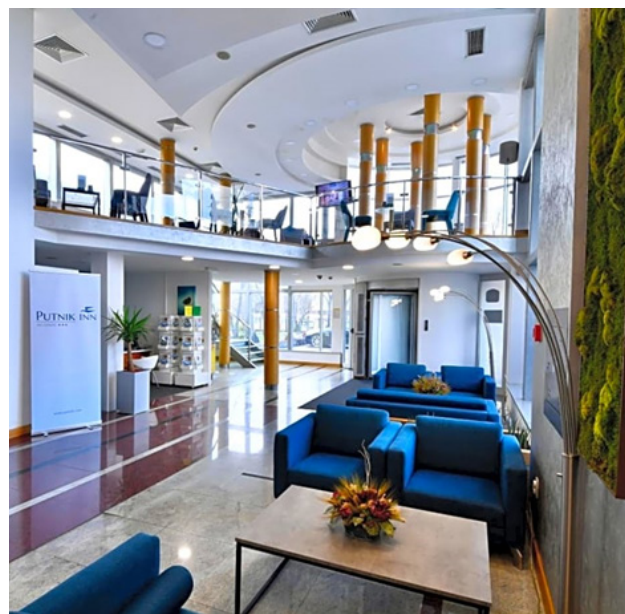


Hotel PUTNIK INN - 3*

located in the center of New Belgrade, only 15 kilometers from Nikola Tesla International Airport, this hotel is a 10-minute drive away from Belgrade's historical center. The Zemun Millennium Building, the Gardoš Fortress, and the Danube Quay are located in the immediate vicinity of the hotel.

Distance from the Venue 6,2 km
9 minutes drive

Price per person per day	Bed and breakfast
Single bed room	120 EUR
Twin bed room	90 EUR



MOXY Hotel - 3*

Moxy Belgrade is situated in the center of the city and offers high quality stay. Moxy interior is a fusion of creative elements, each of them symbolizing specific architectural or art movement. Cultural, bohemian and urban entertainment centers, popular city landmarks and the most upcoming neighborhoods are just steps away.

Distance from the Venue 3,9 km
10 minutes drive



Price per person per day	Bed and breakfast
Single bed room	130 EUR
Twin bed room	95 EUR

