



2025 Chuncheon

Korea Open International Taekwondo Championships(G-2)

Accommodations Guide

The Chuncheon Leisure and Taekwondo Organizing Committee for **the 2025 Chuncheon Korea Open-World Taekwondo(Jul.15~20)** has prepared accommodations for participants and accompanying persons during the event. All accommodation requests will be handled by RYE Tour, the Official Travel Agency for this event.

Booking deadline

Accommodation reservations will close on **June 13, 2025** (Korean Standard Time, GMT+9).
(For any assistance after the deadline, please contact us.)

Reservation

Reservations are available on a first-come, first-served basis. You're required to complete the attached form and return it by email to CKOTKD@ryetour.net

Booking process

1. Send us your booking request by the completed Hotel Reservation Form
2. Receive an invoice from us
3. Make full payment by wire transfer before the payment due date
4. Receive your confirmation along with a form for your rooming list & flight information
5. Send us the completed rooming list & flight information by the given deadline
6. Check in at the hotel with the confirmation we provided

Payment

Full payment must be completed **within 7 days from the invoice issue date**, unless otherwise agreed with us in advance. A copy of the bank transfer is required to be emailed to us with the invoice reference number, team name, and accommodation name for payment tracking.

- Bank name : KEB Hana Bank
- Bank address : 53-1, Yeojuinaru-ro, Yeongdeungpo-gu, Seoul, Korea
- Account number : 149-890042-91438
- Swift code : KOEXKRSE
- Beneficiary : RYE Tour Co., Ltd.

Confirmation

Once the full payment is completed, then confirmation letter will be emailed to you along with the rooming list & flight information form which you must complete and return to us.

Rooming list & Arrival/Departure flight information

You are required to complete the **rooming list & flight information form** and return it to us **no later than June 20**. Please note that if you miss the deadline, seats on the airport shuttle bus to the venue **cannot be guaranteed** unless otherwise arranged with us in advance.

For further inquiry, please contact **RYE Tour**.

TEL. : +82-2-761-2808, EMAIL : CKOTKD@ryetour.net

ADD. : #505, Dong-A Bldg., 7 Gukhoe-daero 70-Gil, Yeongdeungpo-Gu, Seoul, 07238 Korea



2025 Chuncheon

Korea Open International Taekwondo Championships(G-2)

Accommodations Price

Hotel Name	Room type	Room rate			Distance to venue by shuttle
		Per person/night	Pax	Total (per night)	
Benikea Chuncheon Bears Hotel	Twin room	USD70	2	USD140	5 min.
	Single room	USD110	1	USD110	
KT&G Chuncheon Stay	Twin room	USD75	2	USD150	5 min.
	Single room	USD115	1	USD115	
The Jackson9s Hotel	Twin room	USD75	2	USD150	10 min.
	Single room	USD125	1	USD125	
Eston Hotel	Twin room	USD75	2	USD150	10 min.
	Single room	USD125	1	USD125	
The Venezia Suite Hotel	Twin room	USD65	2	USD130	15 min.
	Single room	USD90	1	USD90	
Bella Stay	Twin room	USD70	2	USD140	20 min.
	Single room	USD105	1	USD105	

Accommodations Information

◆ Before reservation, refer to the followings

◆ **The two hotels marked in blue will not be available for booking during the World Taekwondo Cultural Festival.**

◆ **Twin bed : 2 people sharing a room / Single bed : 1 person in a room**
(Single room rate is applied to 1 person occupancy regardless of room type)

◆ The Venezia Suite Hotel

- Breakfast: There is no restaurant in a hotel so breakfast will be provided as a type of boxed meal unless if they don't make the arrangement outside restaurant.

◆ **Jackson9 and Eston Hotel are sharing the same building, just hotel operating agency is different.**

◆ **Room rate includes a breakfast at accommodations and lunch at the venue**
(Unused meal coupon is non-refundable and can't be exchanged in cash)

◆ **Lunch coupon is valid only for the date shown on the coupon.**



2025 Chuncheon

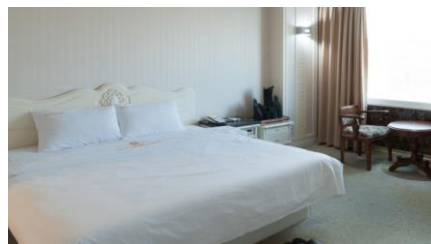
Korea Open International Taekwondo Championships(G-2)

1. Benikea Chuncheon Bears Hotel

ADD. : 376, Sports town-gil, Chuncheon-si Gangwon-do, Republic of Korea

TEL: +82-33-245-4300 / FAX :+82-33-256-2530

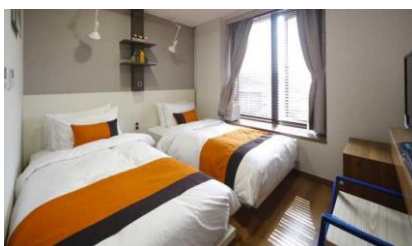
Web: <http://www.benikea.org/hotel/infoHotel.do?hotelNo=1022>



2. KT&G Chuncheon Stay

ADD. : 399, Sports town-gil 25, Chuncheon-si Gangwon-do, Republic of Korea

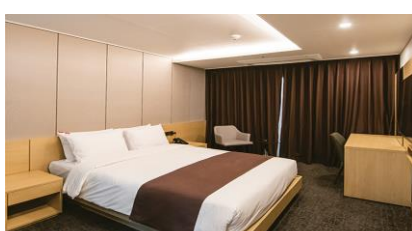
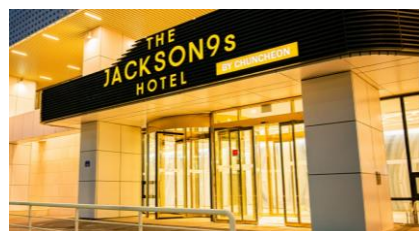
TEL. : +82-33-818-3200 / Web : <https://www.sangsangmadang.com/main/CC>



3. The Jackson9s Hotel

ADD. : 193, Jungang-ro, Chuncheon-si, Gangwon-do, Republic of Korea

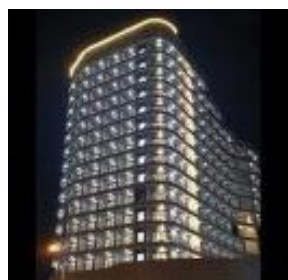
TEL :+82-33-253-0000 / FAX : +82-33-256-0022 / Web: <http://jacksonhotel.co.kr>



4. The Eston Hotel

ADD. : 193, Jungang-ro, Chuncheon-si, Gangwon-do, Republic of Korea

TEL :+82-33-244-0002 / FAX : +82-33-243-0110 / Web: <http://eston-hotel.com/index.php>





2025 Chuncheon

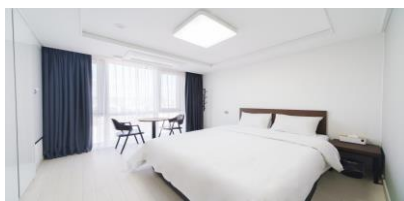
Korea Open International Taekwondo Championships(G-2)

5. The Venezia Suite Hotel

ADD. : 136, Hyoja-ro, Chuncheon-si, Gangwon-do, Republic of Korea

TEL. : +82-33-255-9600 / FAX : +82-33-255-9610

Web: <http://www.theveneziasuite.com/index.php>



6. Bella Stay

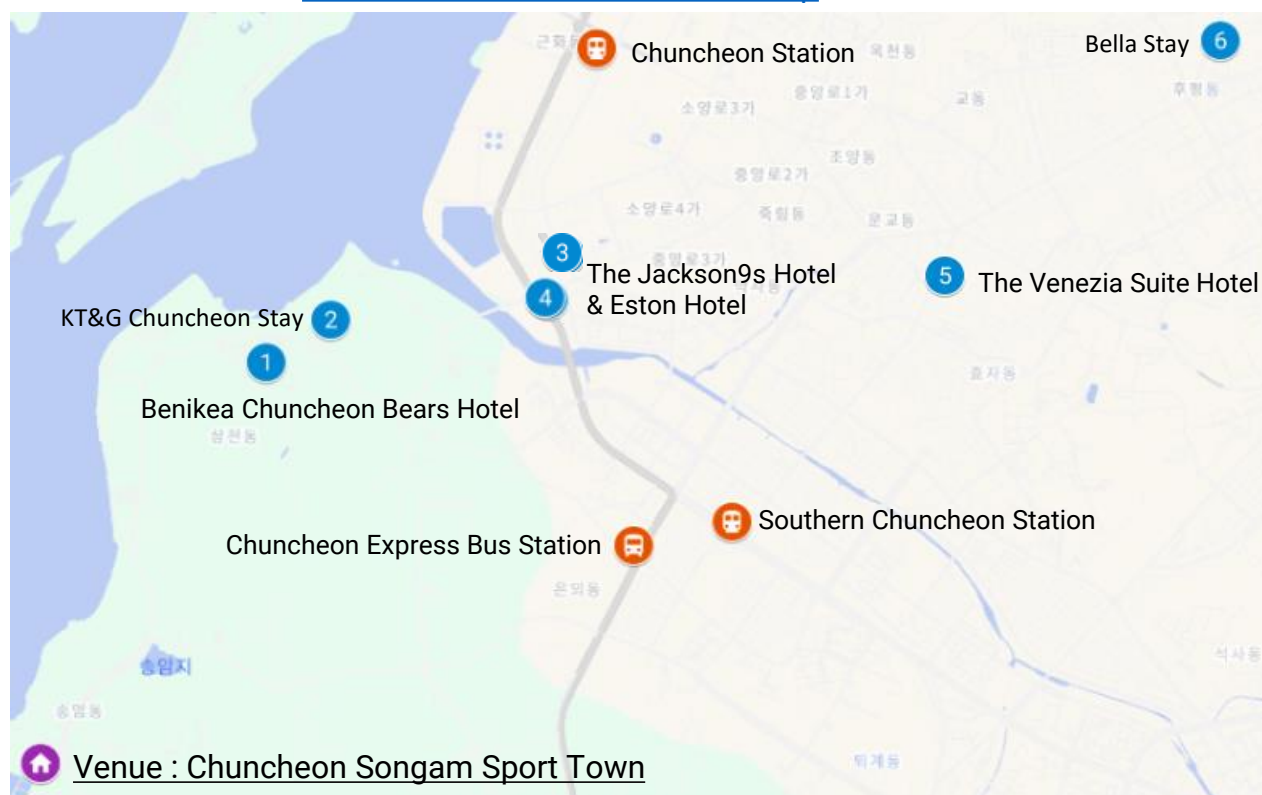
ADD. : 688, Bukhangangbyeon-gil, Namsan-myeon, Chuncheon-si, Gangwon-do, Republic of Korea

TEL. : +82-33-253-9900



Location

Click for bigger map: [2025 Chuncheon Taekwondo Map](#)





2025 Chuncheon Korea Open International Taekwondo Championships(G-2)

Airport shuttle service

Transportation between Incheon International Airport and Chuncheon (the host city) will be provided **only to participants** who book their accommodation through the Official Travel Agency of the **2025 Chuncheon Korea Open International Taekwondo Championships** and submit their flight arrival and departure information **by June 20, 2025**

For Arrival : July 12~14 (3days) : Incheon Int'l Airport → Venue(Hotel)

For Departure : July 20~21 (2days) : Hotel → Incheon Int'l Airport

■ Meeting point at Incheon Int'l Airport

To facilitate transportation between the airport and the venue for these championships, **information counters** will be set up at each airport terminal **for the arrivals** listed above.

You are kindly requested to visit the information counter upon arrival. Please refer to the red-marked location on the map below for each terminal.

*Terminal 1: **Between Exit# 2 and 3** / 8am ~ 9pm

*Terminal 2: **Near Exit# 8** / 8am ~ 9pm

Those arriving outside the operating hours are requested to wait until the information counter opens in order to use the official airport shuttle service, unless prior arrangements have been made with us.

Terminal 1 (Between Exit# 2 and 3, Red dot on map)



Terminal 2 (Near Exit# 8)

